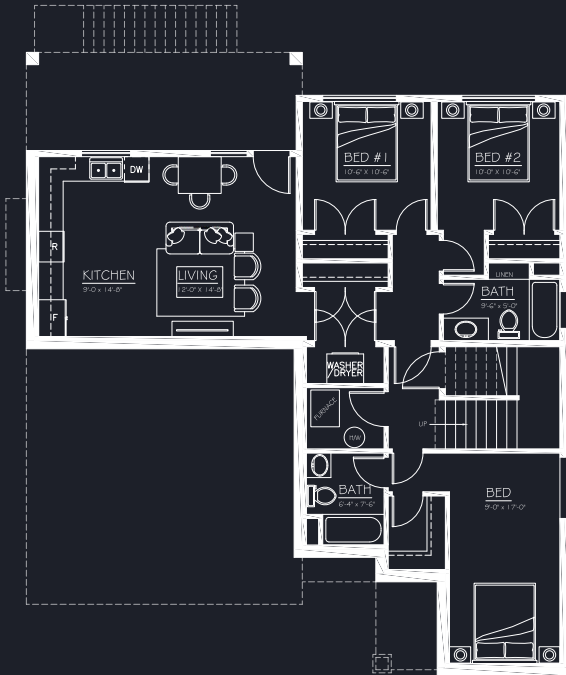


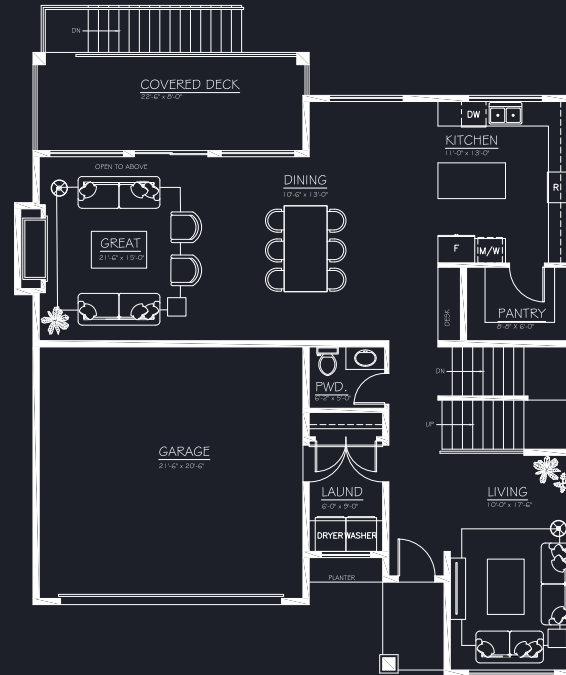
# Lot 9

# BayCrest Heights



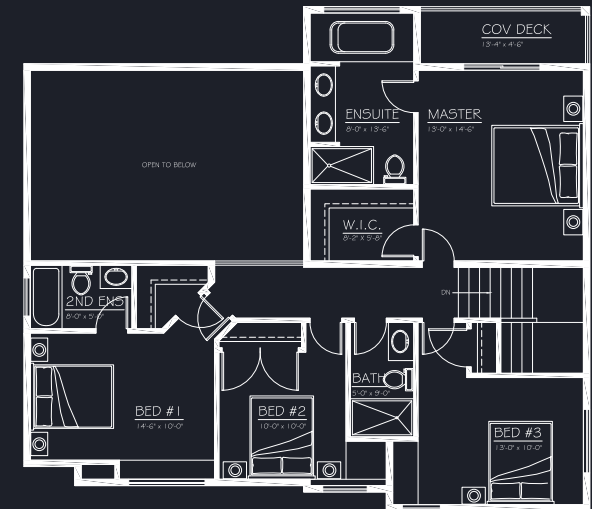
## BASEMENT FLOOR

LIVING - 479.75 sq. ft.  
SUITE - 842.50 sq. ft.  
TOTAL - 1,322.25 sq. ft.



## MAIN FLOOR PLAN

LIVING - 1,296 sq. ft.  
GARAGE - 483.75 sq. ft.  
TOTAL - 1,779.75 sq. ft.



## UPPER FLOOR

LIVING - 1,159 sq. ft.  
OPEN TO BELOW - 367.5 sq. ft.  
TOTAL - 1,526.75 sq. ft.

Baycrest Heights. All rights reserved. Floor plans, specifications, measurements and elevations may be modified without notice. Room sizes, square footage, features and outdoor space may vary. All dimensions and sizes are approximate. Exterior are artist renderings and may not be exactly as shown. E&OE.